

IBM

Sign in | Register

IBM

Profiles

Communities

Apps

Search

Wikis

This Wiki

Search

Log in to participate

IBM i Technology Updates

IBM i Technology Updates

DB2 for i - Technology Updates

General IBM i operating system

Hardware and Firmware

Integration with BladeCenter and System x

Java on IBM i

Performance Tools

Web Integration on i

Systems Director for IBM i

Navigator

IBM i 7.1 - TR8 Enhancements

IBM i 7.2 - Base Enhancements

Systems Management

IBM i 7.1 - TR9 Enhancements

IBM i 7.2 - TR1 Enhancements

Open Source Technologies

IBM i 7.1 - TR10 Enhancements

IBM i 7.2 - TR2 Enhancements

IBM i 7.2 - TR3 Enhancements

IBM i 7.1 - TR11 Enhancements

IBM i Access Family

IBM i 7.3 - Base Enhancements

IBM i 7.2 - TR4 Enhancements

IBM i 7.2 - TR5 Enhancements

IBM i 7.3 - TR1 Enhancements

IBM Cloud Storage Solutions for i

IBM i 7.3 - TR2 Enhancements

IBM i 7.2 - TR6 Enhancements

Application Modernization

IBM i 7.2 - TR7 Enhancements

IBM i 7.3 - TR3 Enhancements

IBM i 7.3 - TR4 Enhancements

IBM i 7.2 - TR8 Enhancements

IBM i 7.2 - TR9 Enhancements

IBM i 7.3 - TR5 Enhancements

Infosphere Guardium V9 – target DB2 for i as a data source

Index

Members

Trash

Tags

Find a Tag

5.4 6.1 7.1 blade bladecenter chart clone collection database db2 director endtcpvrr enhancements error esx for group gui ha i ibm ibm_i install integrated_server iscsi level mc mgtc navigator pdi performance performance_data_investigator performanc e_tools perspective product products ptf required requirements save sf99348 sf99357 sf99369 swa switch system_x target vmware web windows

Cloud | List

Members

You are in: [IBM i Technology Updates](#) > [IBM i Technology Updates](#) > [IBM i 7.2 - TR8 Enhancements](#)

IBM i 7.2 - TR8 Enhancements

Updated April 22, 2018 by [ScottForstie](#) | Tags: *None*

Page Actions

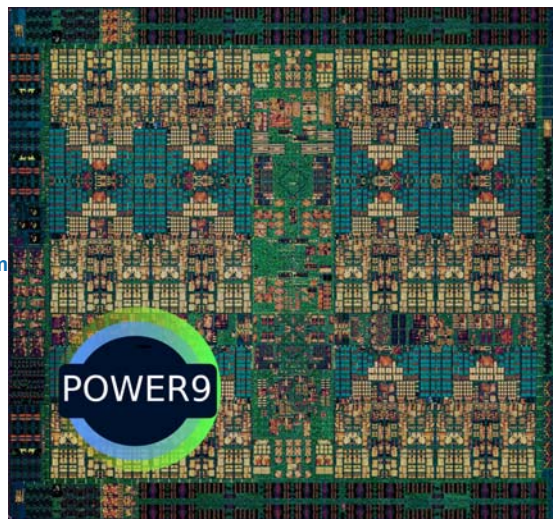
Note: The announcement materials for IBM i 7.2 TR8 can be found here: http://ibm.biz/IBMi_72_TR8

The remainder of this landing page intends to make it easy to see the supporting detail for these enhancements, and more.

General Operating System

- [Enhancements to New Installation Process for LIC Using USB 3.0 Media](#)

Hardware



Platform

- IBM Power S914 model 9009-41A - IBM i native and VIOS configurations
- IBM Power S922 model 9009-22A - IBM i configurations only with VIOS
- IBM Power S924 model 9009-42A - IBM i native and VIOS configurations
- IBM Power H922 model 9009-22H - IBM i configurations only with VIOS
- IBM Power H924 model 9223-42H - IBM i native and VIOS configurations
- Simplified D-mode IPL for systems with POWER9 technology
- IBM PowerVM 2.2.6
- IBM HMC Virtual Appliance Version 9

I/O

- PCIe3 2-port 24/10 GbE IOA (VIOS only)
- PCIe3 2-port 10 GbE IOA (VIOS only)
- PCIe3 32Gb 2-port Fibre Channel Adapter
- PCIe3 16Gb 4-port Fibre Channel Adapter
- 387 GB / 775 GB / 1.55 TB SAS 5xx and 4k SFF-2 and SFF-3 Enterprise SAS SSDs

Functional Enhancements

- Unmap for IBM FlashSystems configurations

Application Development

Rational Development Studio for i

The RPG language continues to move forward as a Modern Business Language. RPG ILE has been JSON) with the new **DATA-INTO** function.

The new function incorporate the ideas of XML-INTO and RPG Open Access. DATA-INTO imports handling many types of data documents including JSON, Property files, CSV files, and more. A 'ha Several sample parses are being shipped with DATA-INTO for parsing JSON documents as well as

community an easy way to add support for new data types or even their own private data types. Full details can be found at [RPG Cafe Forum](#) once the PTFs have been made available.

Great article on this can be found at [IBM Systems Mag](#).

IBM i Integrated Web Services Server



the Authenticated User profile across the connection. This means that the backend ILE program can now be dynamically set to use the authenticated user profile using a hard coded value that was required to be set during the setup process

Web Services Re-Deploy - Additionally the IWS support has been improved to now allow services to be re-deployed vs having to completely remove and then re-install.

VAR CHAR Support - PCML version 7 now has support the type variable length fields (varchar)

- User can now define a field of type VarChar
- Eliminates the need for an extra field to detect field lengths

Details can be found in the Integrated Web Services Server Administration and Programming Guide and the Technology Updates web page, which may be found on the Integrated Web Services Product page:

<http://www.ibm.com/systems/power/software/i/iws/>

IBM i Integrated Web Services Client

The ability to call Web based APIs easily from your ILE program continues to be improved.

Access SOAP Faults from RPG stub PGMs. - Determine what error occurred during the SOAP services call

- SOAP infrastructure provides a documented error return structure
 - This will now be accessible from your RPG program
 - Improved error response

Details can be found in the Web Services Client for ILE Programming Guide and the Technology Updates web page, which may be found on the Integrated Web Services Product page: <http://www.ibm.com/systems/power/software/i/iws/>

ARCAD Converter for i - 5733-AC1

New updates to provide the best possible experience when converting your fixed form RPG to Fully Free-Format RPG. Updates include better handling for trunc issues, including warning or the ability to auto fix/update. The latest updates will be available in ESS in March. Details can be found on the [ARCAD Converter developerWorks page](#).

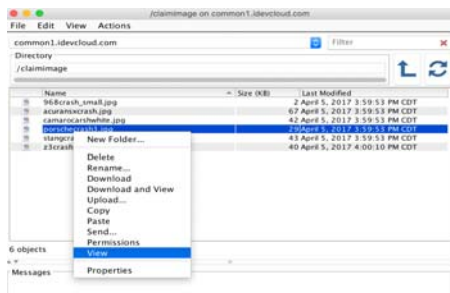
ARCAD Observer for i - 5733 A01

New enhancements and updates to the 5733-A01 product targeted to help application developers better understand their applications and make the correct decisions as they navigate the modernization journey. The latest updates will be available in ESS in March. Details can be found on the [ARCAD Observer for i developerWorks page](#).

Systems Management

IBM i Access Client Solutions

IBM i Access Client Solutions (ACS) continues its path for being the IBM i tool of choice for administrators, programmers or database engineers. In this TR, ACS addressed the needs and concerns of the IBM i user community, providing many requested updates and enhancements.

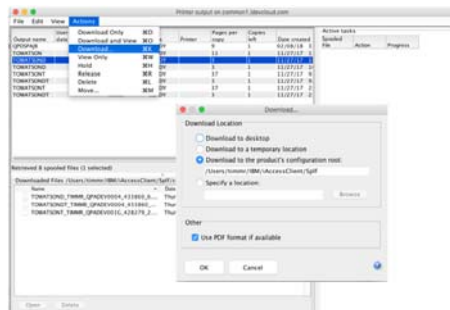
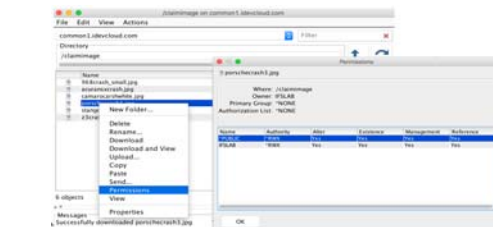


Integrated File System

The Integrated File System support has been enhance with 2 key features.

View - High light an entry, right click and you can now view select entries

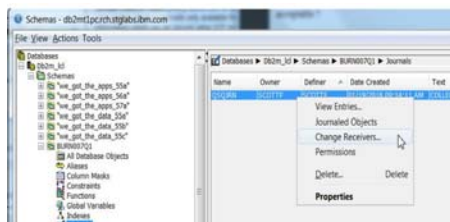
Permissions - Right click on an object or directory and see the permissions currently set for each entry,



Printer Output

A new option has been added to the printer output interface. Users can now select to be prompted when downloading a spool file. This can now choose, both th location for the file as well as the format they wish to have this file down loaded in. This only effects the selected entry, and any previous values from preferences remain un-chagned.

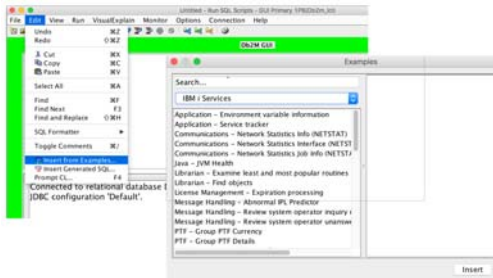
Database tool Updates



Journal Objects - Support for Properties and Change Receivers action has been added to Journal Objects.



Visual Explain - Within Visual Explain a new legend has been included to help the user better understand what is being viewed



Run SQL Scripts

Insert from Examples has been updated to include many more examples of how to make the best use of the many SQL Services that continue to be added year.

For the latest details on the supported services see the [SQL Services developerWorks page](#).

NOTE: This is the last planned release of ACS to support Java 6 and Java 7 as a minimal level. Future releases of Access Client Solutions will require a minimal level of Java 8.

IBM Products

IBM Domino 9.0.1 FP10

- Upgrade Eclipse to 4.6.2
- Upgrade embedded Sametime to 9.0.1x
- Upgrade to JVM 1.8
- Java 1.6 going out of service
- Add on installer for CCM
- Many updates and fixes

For the latest details see the [IBM i developerWorks Domino page](#)

Comments (0) | Versions (13) | Attachments (11) | About

There are no comments.

[Feed for this page](#) | [Feed for these comments](#)

[Privacy](#)

[Terms of use](#)

[Contact](#)

[Accessibility](#)

[Report abuse](#)