

IBM

IBM

Sign in | Register

Search

Profiles

Communities

Apps

Wikis

This Wiki

Search

IBM i Technology Updates

Log in to participate

IBM i Technology Updates

DB2 for i - Technology Updates

General IBM i operating system

Hardware and Firmware

Integration with BladeCenter and System x

Java on IBM i

Performance Tools

Web Integration on i

Systems Director for IBM i

Navigator

IBM i 7.1 - TR8 Enhancements

IBM i 7.2 - Base Enhancements

Systems Management

IBM i 7.1 - TR9 Enhancements

IBM i 7.2 - TR1 Enhancements

Open Source Technologies

IBM i 7.1 - TR10 Enhancements

IBM i 7.2 - TR2 Enhancements

IBM i 7.2 - TR3 Enhancements

IBM i 7.1 - TR11 Enhancements

IBM i Access Family

IBM i 7.3 - Base Enhancements

IBM i 7.2 - TR4 Enhancements

IBM i 7.2 - TR5 Enhancements

IBM i 7.3 - TR1 Enhancements

IBM Cloud Storage Solutions for i

IBM i 7.3 - TR2 Enhancements

IBM i 7.2 - TR6 Enhancements

Application Modernization

IBM i 7.2 - TR7 Enhancements

IBM i 7.3 - TR3 Enhancements

IBM i 7.3 - TR4 Enhancements

IBM i 7.2 - TR8 Enhancements

IBM i 7.2 - TR9 Enhancements

IBM i 7.3 - TR5 Enhancements

Infosphere Guardium V9 – target DB2 for i as a data source

Index

Members

Trash

Tags

Find a Tag

5.4 6.1 7.1 blade bladecenter chart clone collection database db2 director endtcpshr enhancements error esx for group gui ha i ibm ibm_i install integrated_server iscsi level mc mgtc navigator pdi performance performance_data_investigator performanc e_tools perspective product products ptf required requirements save sf99348 sf99357 sf99369 swa switch system_x target vmware web windows

Cloud | List

Members

You are in: [IBM i Technology Updates](#) > [IBM i Technology Updates](#) > [IBM i 7.2 - TR9 Enhancements](#)

IBM i 7.2 - TR9 Enhancements

Updated August 17, 2018 by Timmr | Tags: None

Page Actions

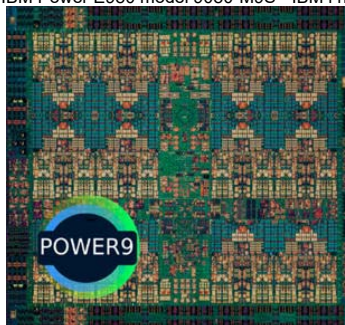
Note: The announcement materials for IBM i 7.2 TR9 can be found here: https://www-01.ibm.com/common/ssi/ShowDoc.wss?docURL=/common/ssi/rep_ca/9/897/ENUS218-359/index.html&request_locale=en

The remainder of this landing page intends to make it easy to see the supporting detail for these enhancements, and more.

Hardware

Platform

- IBM Power E980 model 9080-M9S - IBM i native and VIOS configurations



I/O

- #EC67 - PCIe4 2-port LP 100 Gb ROCE EN adapter (VIOS NIC only)
- 931 GB / 1.86 TB / 3.72 TB SAS 4k SFF-3 and SFF-2 Mainstream SAS SSDs

Functional Enhancements

- Unmap for IBM Spectrum Virtualize configurations
- SAN Multipath Support for Tape Drives - Extended to additional tape drives

Db2 for i Enhancements



Db2 for i - Functional Enhancements

- JTOpen JDBC driver – Alternate Server Support
- RPG Embedded SQL improved ease of use
- Optional parameter support for External procedures and functions
- JSON - Uniqueness controls for Key names
- Table correlation name enhanced to be optional
- DECFLOAT_FORMAT() built-in function
- NOW() built-in function enhanced
- EXTRACT() built-in function enhanced
- VARCHAR_FORMAT() and TO_CHAR() built-in functions enhanced

Db2 for i - Performance Enhancements

- Implicit parameter marker conversion on some data-change-table-references
- Improved code generation for SQL procedures, functions, & triggers

Db2 for i - Database Management Enhancements

- QSYS2.GENERATE_SQL_OBJECTS() procedure
- QSYS2.SYSPARTITIONSTAT enhancement
- QSYS2.PARSE_STATEMENT() table function enhancement

IBM i Services (new and enhanced)

- QSYS2.ACTIVE_JOB_INFO()

- [QSYS2.JOB_DESCRIPTION_INFO](#)
- [QSYS2.NETSTAT_INFO](#)
- [QSYS2.NETSTAT_JOB_INFO](#)
- [QSYS2.OUTPUT_QUEUE_ENTRIES_BASIC](#)

Db2 for i - Services (new and enhanced)

- [QSYS2.GENERATE_SQL_OBJECTS\(\)](#) procedure
- [QSYS2.SYSPARTITIONSTAT](#) enhancement
- [QSYS2.PARSE_STATEMENT\(\)](#) table function enhancement

OmniFind for IBM i

- [OmniFind - Programmatic Search of the IFS](#)

Db2 Web Query V2.2.1

- [EZ-Install Enhanced: \[ibm.biz/db2wqezinstall\]\(#\)](#)

Rational Developer for i

RD i 9.6.0.4

Big News... RD i Trial period has now been extended to **120 days!!!** Great for students just learning!!

Many new features to help **both** the experienced RD i developer as well as the 'PDM' user transition.

PDM comes to RD i - all the comfort and muscle memory you have been using with the old SEU/PDM interface is now part of RD i.



- All the same key commands
- Function keys
- Power filtering
- Searching
- **BUT** now with the power and enhanced productivity that RD i includes

Details on all that has been added as well as details on how to obtain can be found at the [RD i Developer Hub](#) - [RD i Developer Hub](#).

Additional fixes, and updates can be found on the [RD i Service Support page](#).

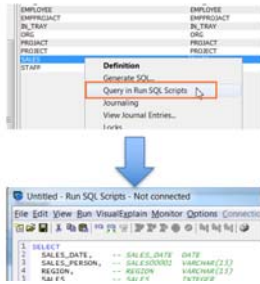
Access Client Solutions

The strategic interface for Accessing, Managing your IBM i and the database continues to improve. Based on the in input from our user community as well as working to finish closing any remains gaps as we continue the transition from the iAccess for Windows solution to ACS.

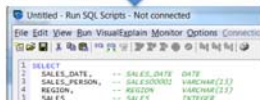
ODBC Driver NOW available on ACS down load page!!!

The ODBC (and .net) drivers for Windows and Linux are now available on the ACS Download page. No longer do you need to go to ESS. Simple and easy ! Use the short URL [-http://ibm.biz/IBMi_ACS](http://ibm.biz/IBMi_ACS)

Generate SQL Objects

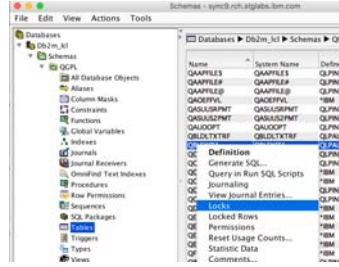


- Perfect order



Schemas

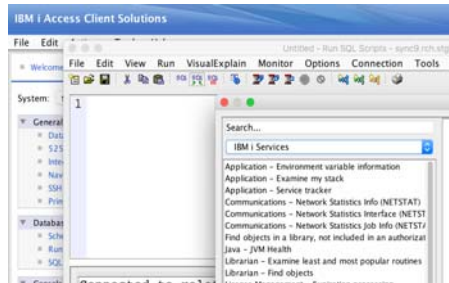
- Query in Run SQL Scripts
- View Journal Entries



- Locked Rows

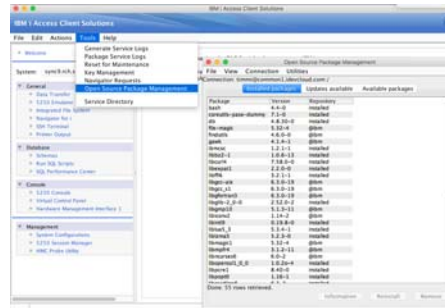
- Locks (Alias/Index/Table/View)
- Transactions
- Index and MQT Partition Lists

Run SQL Scripts



- More Insert from Examples

Open Source Package Manager



- Interface to view and manage the RPM distributions on your IBM i.

5250 Java Print Services

16/05/21 13:18 PAGE 1

製品表

02-15-0023-001

製品番号	製品名	製品説明	製品種別	製品単位	製品価格	製品在庫	製品在庫	製品在庫	製品在庫
0001	5250 Java Print Services	5250 Java Print Services	ソフトウェア	1	1,500	1,500	1,500	1,500	1,500
0002	5250 Java Print Services	5250 Java Print Services	ソフトウェア	1	1,500	1,500	1,500	1,500	1,500
0003	5250 Java Print Services	5250 Java Print Services	ソフトウェア	1	1,500	1,500	1,500	1,500	1,500
0004	5250 Java Print Services	5250 Java Print Services	ソフトウェア	1	1,500	1,500	1,500	1,500	1,500
0005	5250 Java Print Services	5250 Java Print Services	ソフトウェア	1	1,500	1,500	1,500	1,500	1,500
0006	5250 Java Print Services	5250 Java Print Services	ソフトウェア	1	1,500	1,500	1,500	1,500	1,500
0007	5250 Java Print Services	5250 Java Print Services	ソフトウェア	1	1,500	1,500	1,500	1,500	1,500
0008	5250 Java Print Services	5250 Java Print Services	ソフトウェア	1	1,500	1,500	1,500	1,500	1,500
0009	5250 Java Print Services	5250 Java Print Services	ソフトウェア	1	1,500	1,500	1,500	1,500	1,500
0010	5250 Java Print Services	5250 Java Print Services	ソフトウェア	1	1,500	1,500	1,500	1,500	1,500

- Updates to the 5250 print support to provide a better native printing option.

Integrated File System - Permissions Enhancements

- From the IFS interface you can now view and update the specific authorities for each directory and file



Open Source

Open Source delivery mechanism and schedules

Open source technologies are not delivered as part of the technology refresh package. Instead, they are continuously delivered as they become available. All open source features covered here are already available, with the exception of TLS 1.3 support, which is only available in draft form, currently. Also, none of these functions are delivered via an installed product or PTF's (see the next section regarding RPM-based deliveries).

RPM-based deliveries and package manager

Many open source offerings are now available in RPM form. Large portions of the Linux community use RPM-based packages to distribute software. A package manager (yum) has also been delivered. With these changes, more open source technology can be made available, and the management and installation of these packages can be done in mere minutes.

Here are some examples of common tasks that can now be accomplished with the 'yum' command:

- yum list installed (list installed packages)
- yum list available (list available packages)
- yum list updates (list available updates to packages)
- yum install <package> (install a package)
- yum search <package> (search for a package)

For information on how to get started with these new RPM-based technologies, please visit <http://ibm.biz/ibmi-rpms>



Language updates: Node.js version 8, Python version 3.6

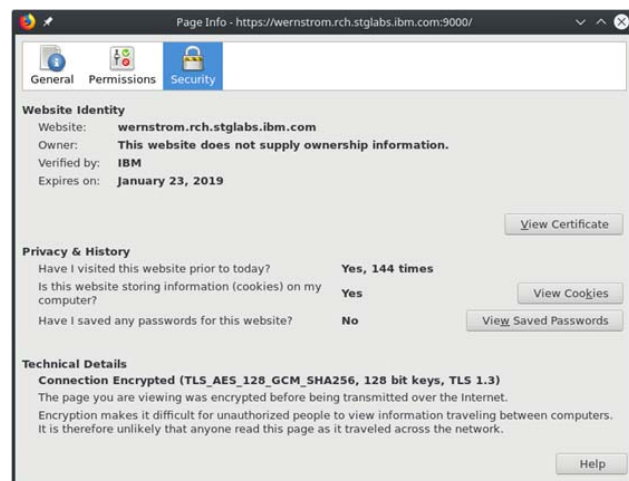
As part of the RPM-based offering set, new language versions are available. Node.js version 8 and Python 3.6 both offer improved language features and performance.



TLS 1.3 support

As part of the RPM-based offering set, API's and tools based on OpenSSL 1.1.1 are available. This brings TLS 1.3 capabilities to any technology that utilizes OpenSSL.

Also, the nginx HTTP server has been built to leverage OpenSSL 1.1.1 and therefore TLS 1.3. This allows nginx to be a TLS 1.3-capable frontend to virtually any web workloads.



The 'updatedb' and 'locate' tools

As part of the RPM-based offering set, the 'updatedb' and 'locate' utilities are available. This allows for incredibly fast location of files on the system. The 'updatedb' command, when run, will populate a database with a list of files on the system. This takes several minutes and is often run on a nightly basis. Once the database is populated, the 'locate' command can very quickly find files whose filename or directory contains a given string.

```
-bash-4.4$ locate netstat.py
/home/JGORZINS/-ibmi_netstat_py/netstat.py
```

GNU C Compiler (GCC) and surrounding toolchain

As part of the RPM-based offering set, GCC version 6.3.0 is available. Also, many tools that are often needed to build PASE or open source applications are also delivered. This includes autoconf, automake, pkg-config, cmake, libtool, m4, and many more.

LFTP

As part of the RPM-based offering set, the LFTP utility is now available. LFTP is a sophisticated file transfer program. While it can serve as a command-line FTP utility, it understands a number of protocols including ftp, sftp, http, and others. It comes with a variety of features, such as the ability to create site mirrors or perform multiple tasks in parallel.

GNU nano

As part of the RPM-based offering set, the 'nano' editor allows for easy editing of files within a terminal session. It supports several usability features like copy/paste and search/replace with regular expressions. It can also be expanded to support syntax highlighting for several languages by running the following commands from an SSH terminal:

```
git clone https://github.com/scopatz/nanorc.git ~/.nano
cat ~/.nano/nanorc >> ~/.nanorc
```

```
GNU nano 2.9.0 index.js
var https = require('https')
var http = require('http')
var io = require('socket.io')()
var os = require('os')
var fs = require('fs')
if (process.version.substring(0,3) == "v4.")
  var db = require('/QOpenSys/QIBM/ProdData/OP5/Node4/os400/db2i/lib/db2');
else
  var db = require('/QOpenSys/QIBM/ProdData/Node/os400/db2i/lib/db2');

var options = {
  key: fs.readFileSync('./ibmidash-key.pem'),
  cert: fs.readFileSync('./ibmidash-cert.pem')
}

var port_secure = process.argv[2] || 8443
var port_insecure = process.argv[3] || 8080
var host_name = process.argv[4] || os.hostname()

app.locals._ = require('underscore');
app.locals._.str = require('underscore.string');

db.debug(true)
db.init()
db.conn('*LOCAL*')

AC Get Help  AC Write Out  AW Where Is  AX Cut Text  AJ Justify  AC Cur Pos
AX Exit      AR Read File  AW Replace  AU Uncut Text  AT To Spell  AA Go To Line
```

Other GNU Tools

As part of the RPM-based offering set, we have delivered industry-standard GNU forms of many common commands. Some examples would include:

- less
- grep
- ls
- awk
- sed
- find
- patch
- tar
- iconv
- sort

This allows for improved compatibility with scripts, documentation, or products in the open source community.

Comments (0) | Versions (12) | Attachments (0) | About

There are no comments.

[Feed for this page](#) | [Feed for these comments](#)

[Privacy](#)

[Terms of use](#)

[Contact](#)

[Accessibility](#)

[Report abuse](#)